

Realignment of Route 8 Southbound Exit 34 Off-Ramp at Watertown Avenue and Robbins Street



***Conceptual Public Information Meeting/CEPA Scoping Meeting
November 15, 2023***



Meeting Agenda

- **Project Team Introduction**
- **Title VI – Civil Rights**
- **Connecticut Environmental Policy Act**
- **The New Mix: Overview & Breakout Projects**
- **Realignment of Route 8 Southbound Exit 34 Off-Ramp at Watertown Avenue and Robbins Street**
 - Project Location
 - Project Need
 - Proposed Design
- **Public Outreach / Next Steps**
- **Questions**

Project Leadership Team

Connecticut Department of Transportation

- Michael N. Calabrese, PE, Division Chief
- Nilesh Patel, PE, Principal Engineer
- Jonathan Dean, PE, Project Manager
- Joe Belrose, EIT, Project Engineer

HNTB Corporation

- Rudy Franciamore, PE, Project Manager
- David Schweitzer, PE, Technical Advisor
- David Giel, PE, PTOE Traffic Engineer
- Samantha Scharpf, PE, Project Engineer

Title VI – Civil Rights

No Person shall, on the basis of race, color or national origin, be excluded from participation or subject to discrimination in the development of this project.

- Civil Rights flyer available:
<https://bit.ly/CTDOTCivilRights>
- Demographic Survey appreciated:
<https://bit.ly/CTDOT-Feedback>



This is a CTDOT Proposed Early Action Project identified under the PEL Study, State Project No. 0151-0331.

Título VI Aviso al Público



Departamento de Transporte de Connecticut

Título VI Aviso al Público

- ◇ El Departamento de Transporte de Connecticut (CTDOT) se compromete a asegurar que ninguna persona sea excluida de participar en, o le sean negados los beneficios de, sus servicios de transporte basándose en la raza, color o país de origen de la persona protegida por el Título VI de la Ley de los Derechos Civiles. Si a usted le parece que ha sido objeto de discriminación en lo que corresponde al Título VI, puede presentar una queja al CTDOT.
- ◇ Para más información sobre el programa de derechos civiles del CTDOT y el proceso de presentar una queja, comuníquese con el Coordinadora del Título VI del CTDOT al teléfono (860) 594-2169, TRS 711; Debra.Goss@ct.gov. También puede visitar nuestra oficina administrativa en 2800 Berlin Turnpike, Newington, CT 06131. Para más información, visite www.ct.gov/dot.
- ◇ Un denunciante puede presentar una queja directamente ante la Federal Transit Administration si lo hace ante la FTA Office of Civil Rights, Attention: Title VI Program Coordinator, East Building, 5th Floor-TCR, 1200 New Jersey Ave., SE, Washington, DC 20590.
- ◇ Un denunciante podrá presentar una queja directamente ante la Federal Highway Administration si lo hace ante la FHWA Office of Civil Rights, Attention: Title VI Program Coordinator, 8th Floor E81-105, 1200 New Jersey Ave., SE, Washington, DC 20590.
- ◇ Para recibir más información o ayuda gratuita en otros idiomas, llame al (860) 594-2109.

Connecticut Environmental Policy Act (CEPA)

- CEPA Core Purpose
 - Identify and assess potential environmental impacts
 - Evaluate alternatives to avoid or minimize such impacts
 - Public Involvement

CEPA review required for any State action that could have major impact on the environmental, social, and/or economic resources



Connecticut Environmental Policy Act (CEPA)

Physical

- Air Quality & Greenhouse Gas Emissions
- Noise
- Traffic
- Utilities & Services
- Stormwater
- Solid & Hazardous Waste
- Aesthetics & Scenic Resources
- Cultural Resources
- Energy Use

Natural

- Erosion or Sedimentation
- Surface Water
- Groundwater
- Floodplains
- Wetlands
- Fisheries
- Plants & Wildlife/ State Listed Species
- Changing Climate/Resilience

Socioeconomic

- Land Use & Zoning
- State, Regional and Local Land Use Planning
- Public Health & Safety
- Recreational Resources
- Environmental Justice
- Plan of Conservation & Development

What is CEPA?

What is CEPA Scoping?

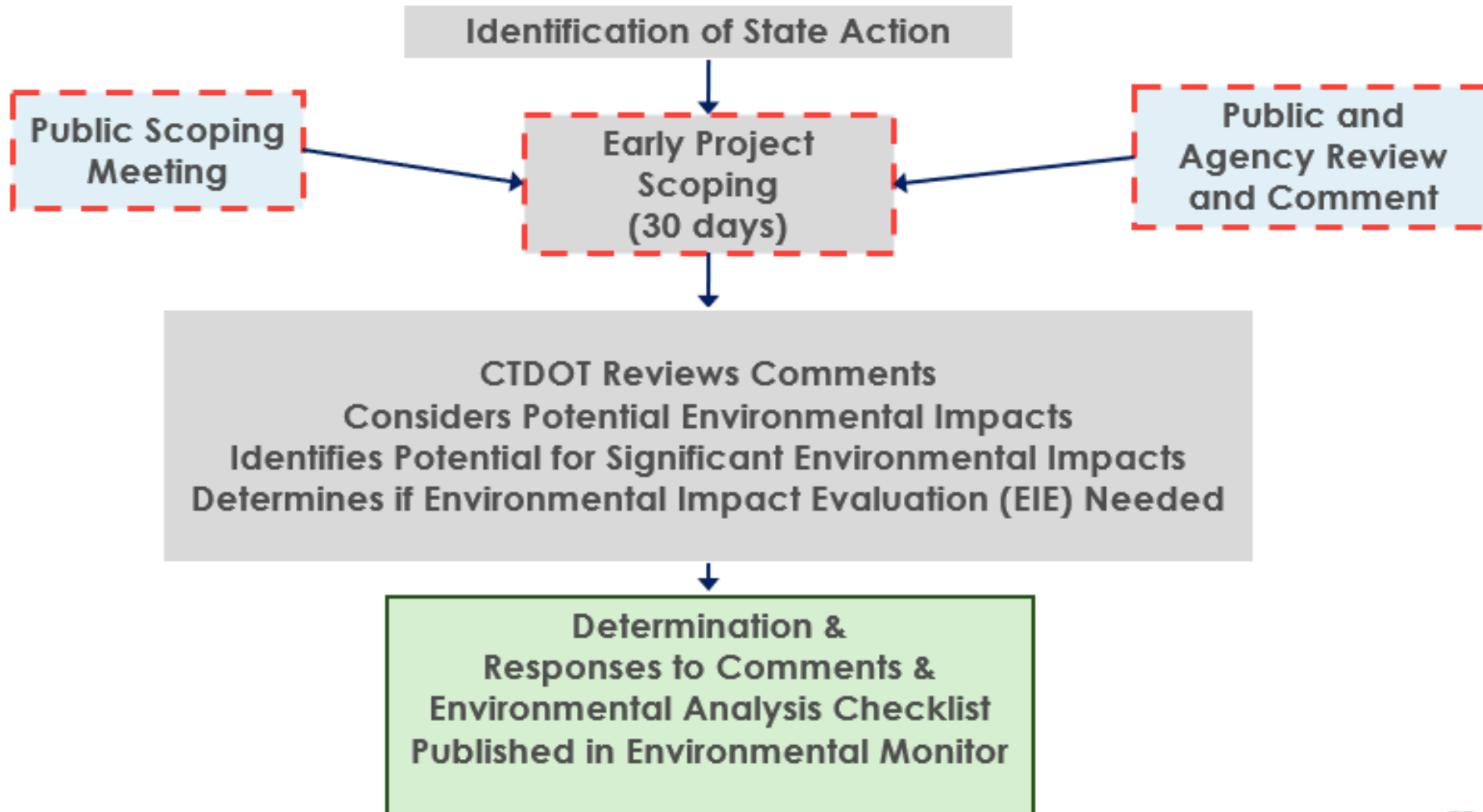
- Gathering and analysis of information that a state agency will use to establish the breadth of environmental review of a proposed project.

Public Scoping Process

- Publish Notice of Project in Environmental Monitor
- Minimum 30-day public comment period
- Identify environmental concerns / potential alternatives
- Public Scoping Meeting
- Determine if an Environmental Impact Evaluation (EIE) is needed

<https://portal.ct.gov/CEQ/Environmental-Monitor/Environmental-Monitor/Environmental-Monitor---Current-Issue>

CEPA Process

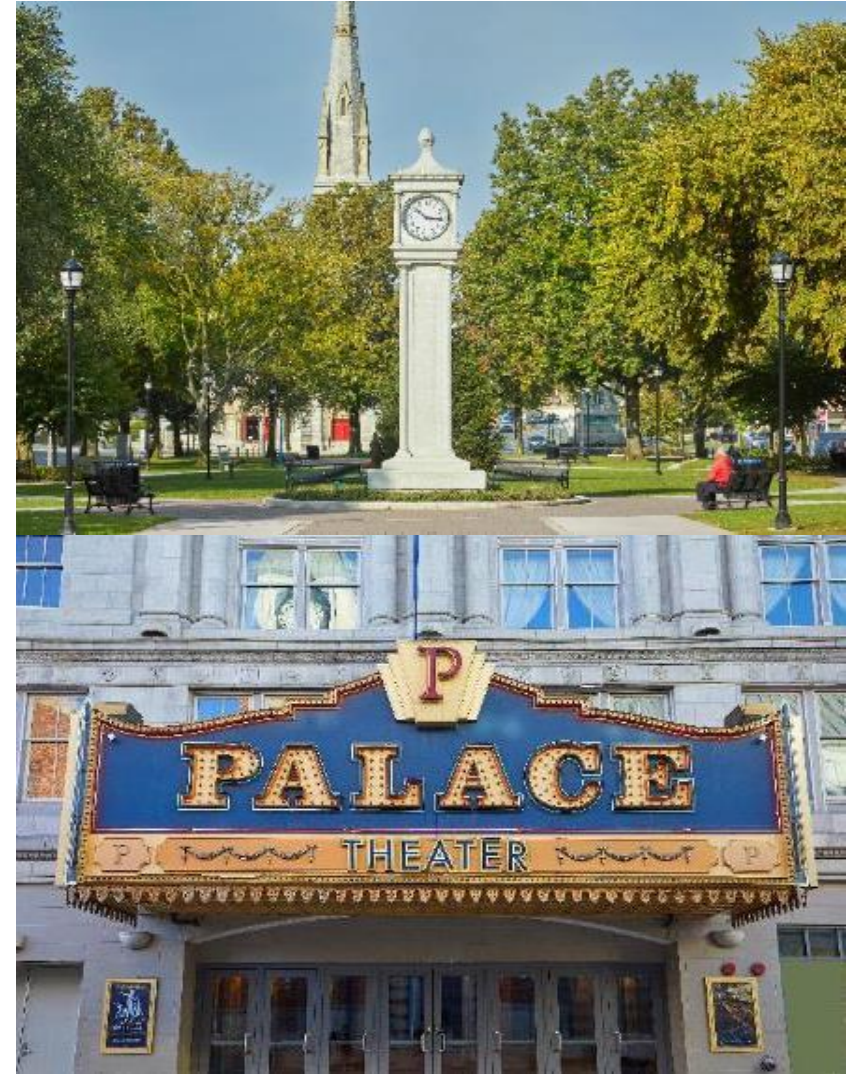


An aerial photograph of a complex highway interchange, likely a cloverleaf interchange, with multiple lanes and overpasses. The image is overlaid with several semi-transparent circular callouts in shades of blue and purple, highlighting specific areas of interest. The background is a solid blue gradient.

The New Mix: Overview & Breakout Projects

New Mix: Project Overview

- Long-term plan for the future of the Mixmaster
- Analyze rehabilitation and replacement options that:
 - Modernize
 - Improve safety & function of local roadway network & the interchange
 - Reduce congestion
 - Align with economic development & community plans
- Projects will occur over time



Breakout Projects to Occur Over Time



Early Action Projects

Standalone improvements to the highway and local roadway network

Near-Term Projects

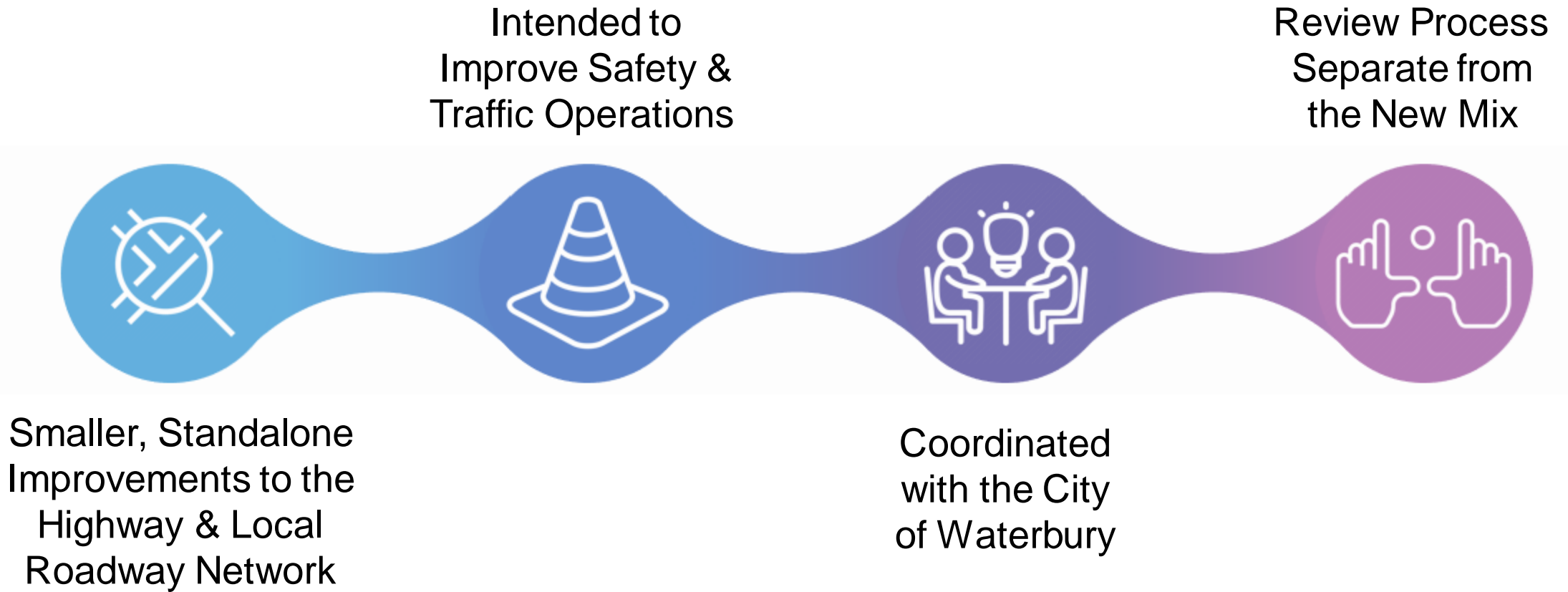
Improvements to highway approaching Mixmaster compatible with Long-Term Projects



Long-Term Projects

Reconstruction of core interchange structures

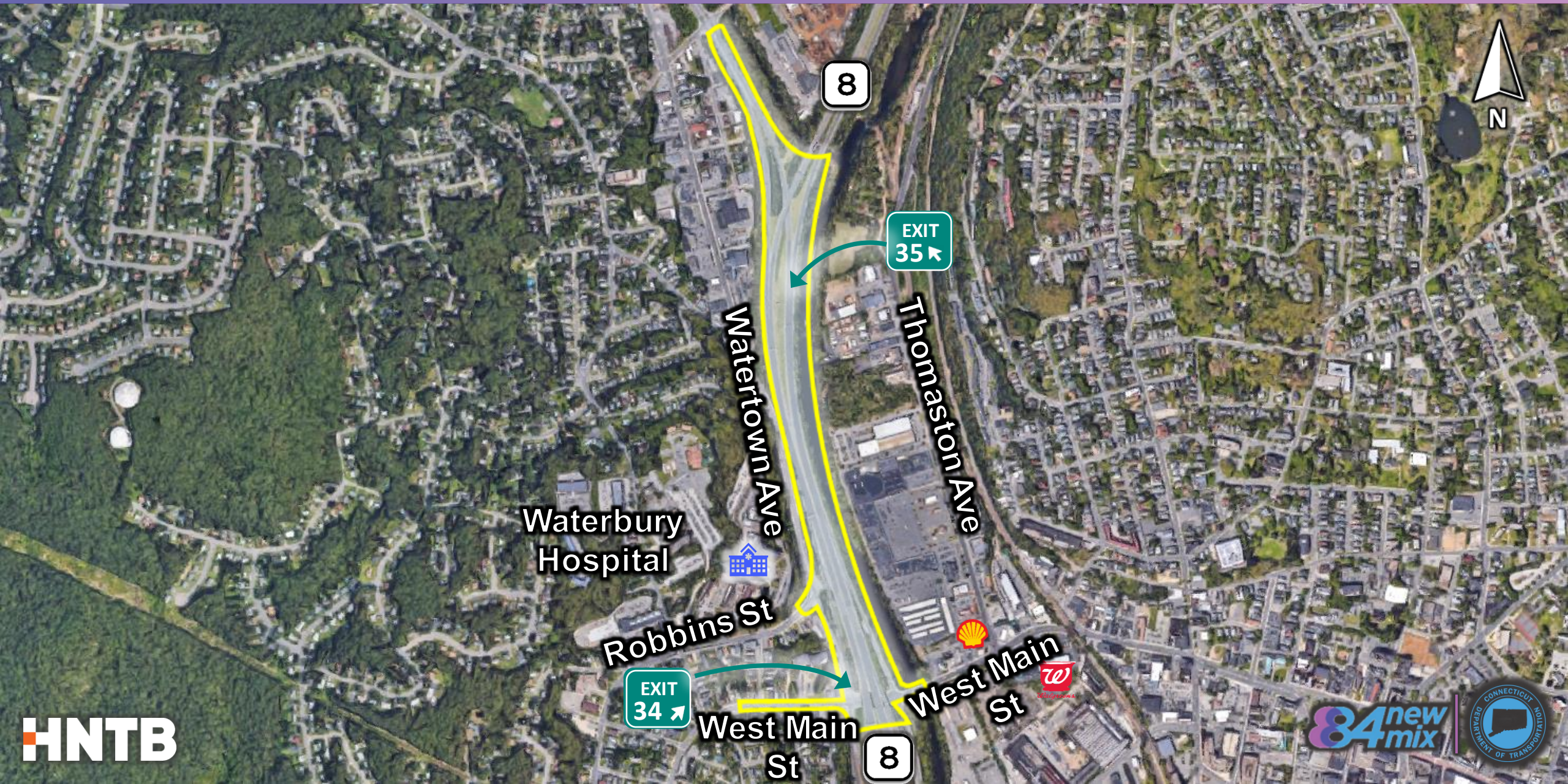
Early Action Projects



An aerial photograph of a highway interchange, likely Exit 34 of Route 8. The image is overlaid with a semi-transparent blue and purple gradient. Several circular callouts of varying sizes are placed over the interchange, highlighting specific areas of interest. The text is centered over the image in a white, bold, sans-serif font.

***Realignment of Route 8 Southbound
Exit 34 Off-Ramp at
Watertown Avenue and Robbins Street***

Project Location



Project Need: Current Issues

West Main Street

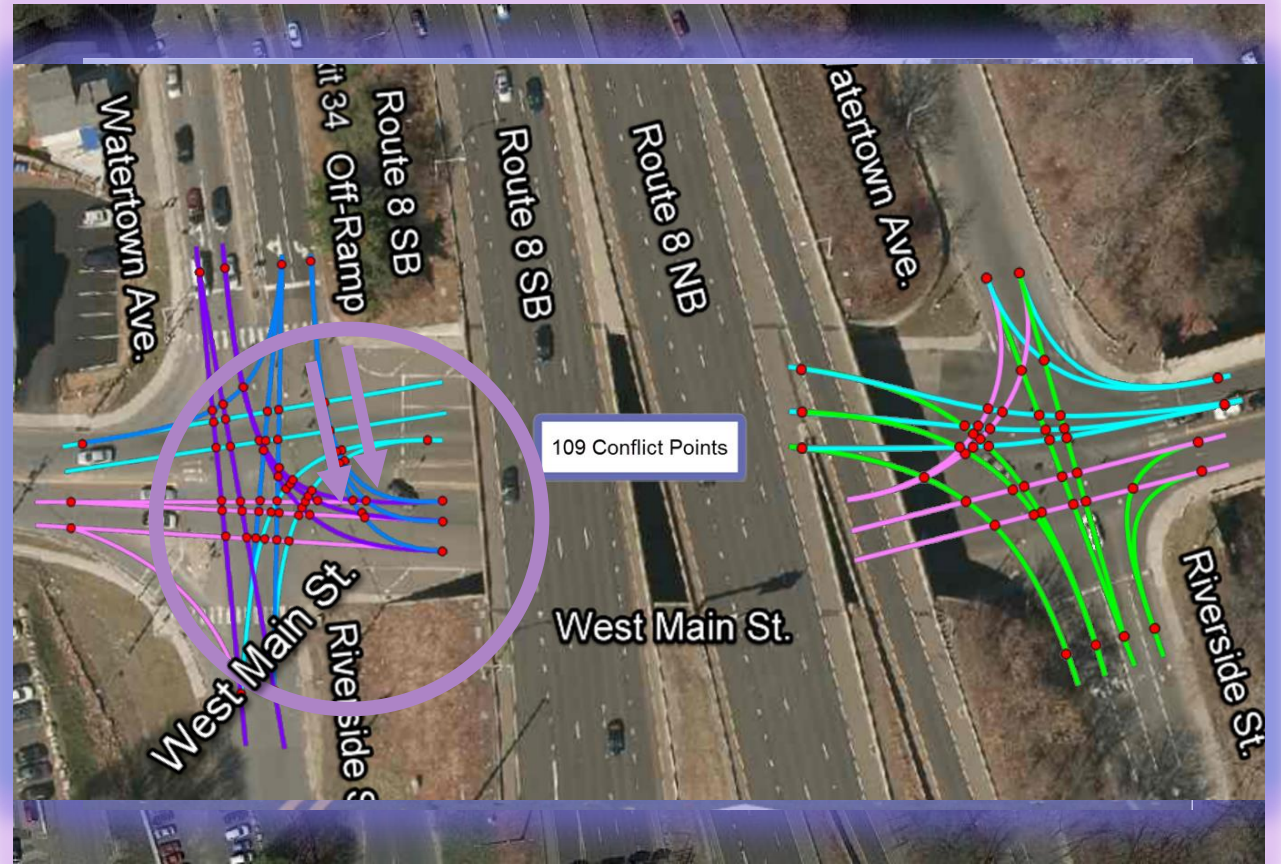
- Primary East-West crossing of Naugatuck River other than I-84
- Congestion along corridor
- Riverside Street/Watertown Avenue intersections
- Highland Avenue intersection



Project Need: Current Issues

West Main Street at Riverside Street/Watertown Avenue

- Congestion
- Dual Approach of Watertown Avenue and Route 8 Southbound Exit 34 Off-Ramp
- Poor Eastbound/Westbound Alignments
- High Crash Locations



Project Need: Current Issues

West Main Street at Highland Avenue

- High crash location
- Stop-controlled Highland Avenue
- Located 350 feet west of Watertown Avenue



Project Goals

Improve:

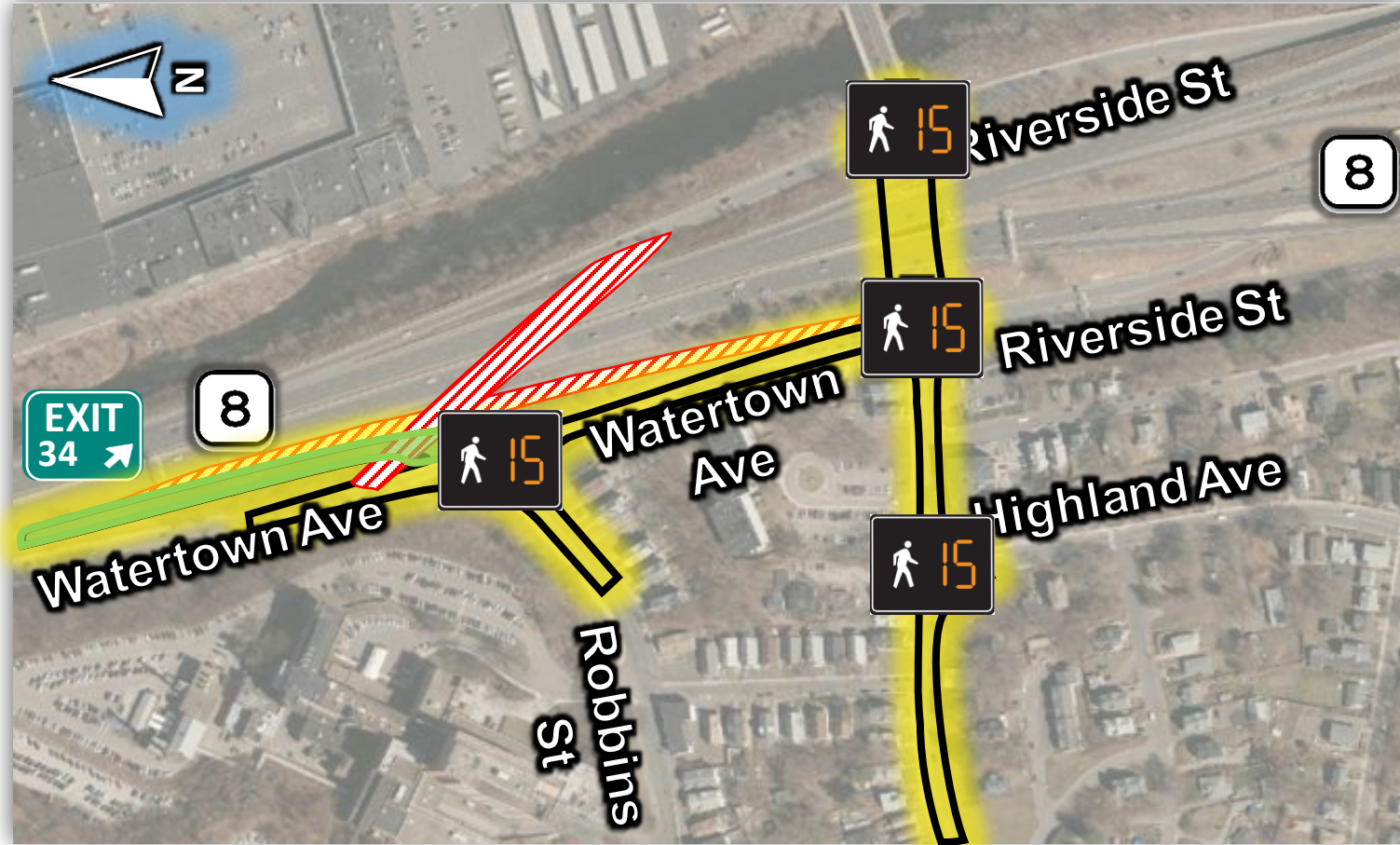
- ***Safety*** on West Main Street between Highland Avenue and Riverside Street/Watertown Avenue
- ***Traffic Operations*** on West Main Street
- ***Air Quality*** (Reduction of idling cars)

An aerial photograph of a highway interchange, featuring a curved overpass and multiple lanes of traffic. The image is overlaid with several semi-transparent blue and purple circles and shapes, creating a modern, graphic design. The text is centered over the middle of the image.

Proposed Concept

Project Purpose & Components

Local Project Limits & Improvements



Improvements:

- Traffic and Intersection
- Pedestrian Accommodations
- Pavement Restoration & Pavement Markings



Legend

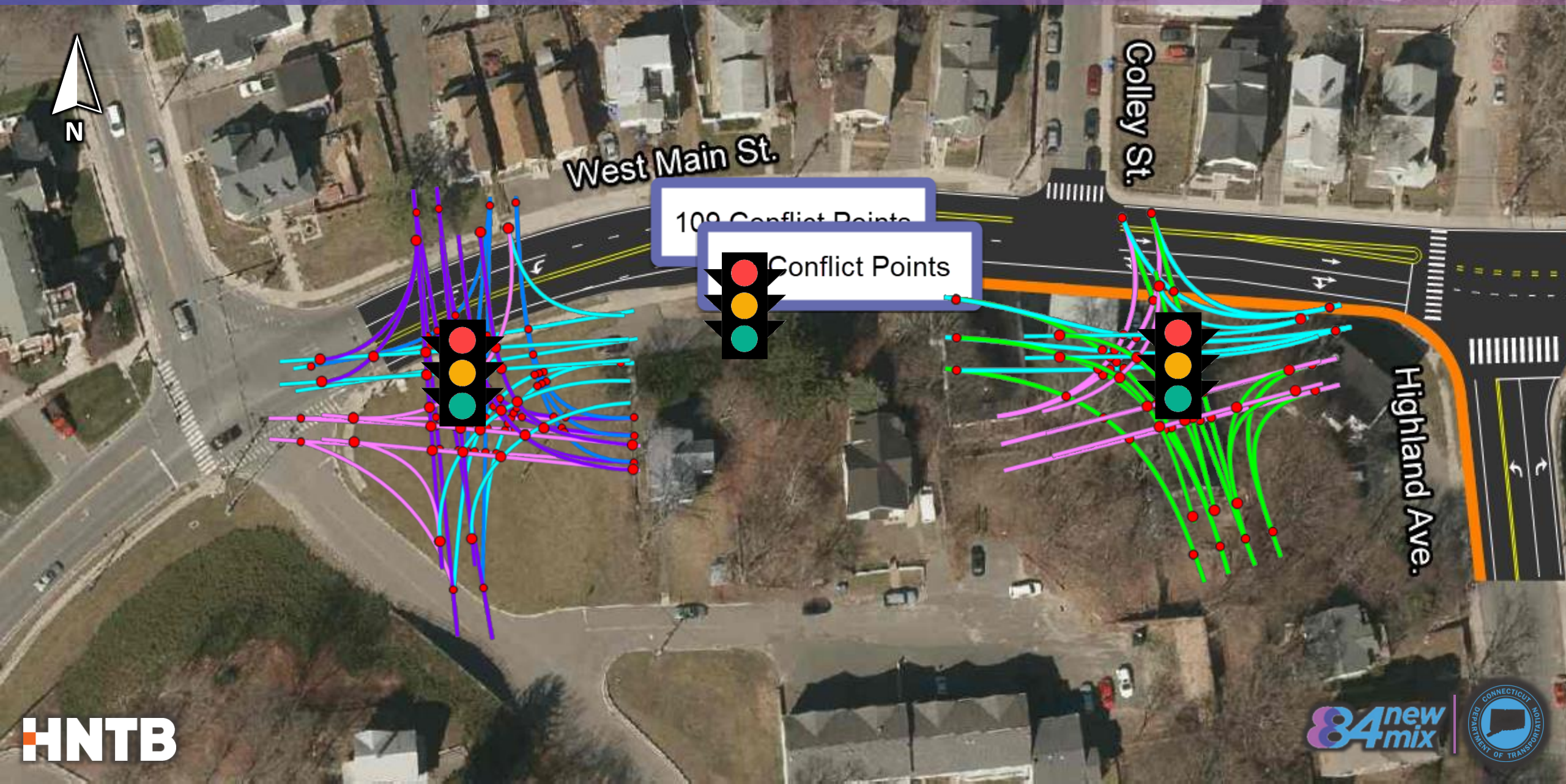
Closure



Relocated Off-Ramp

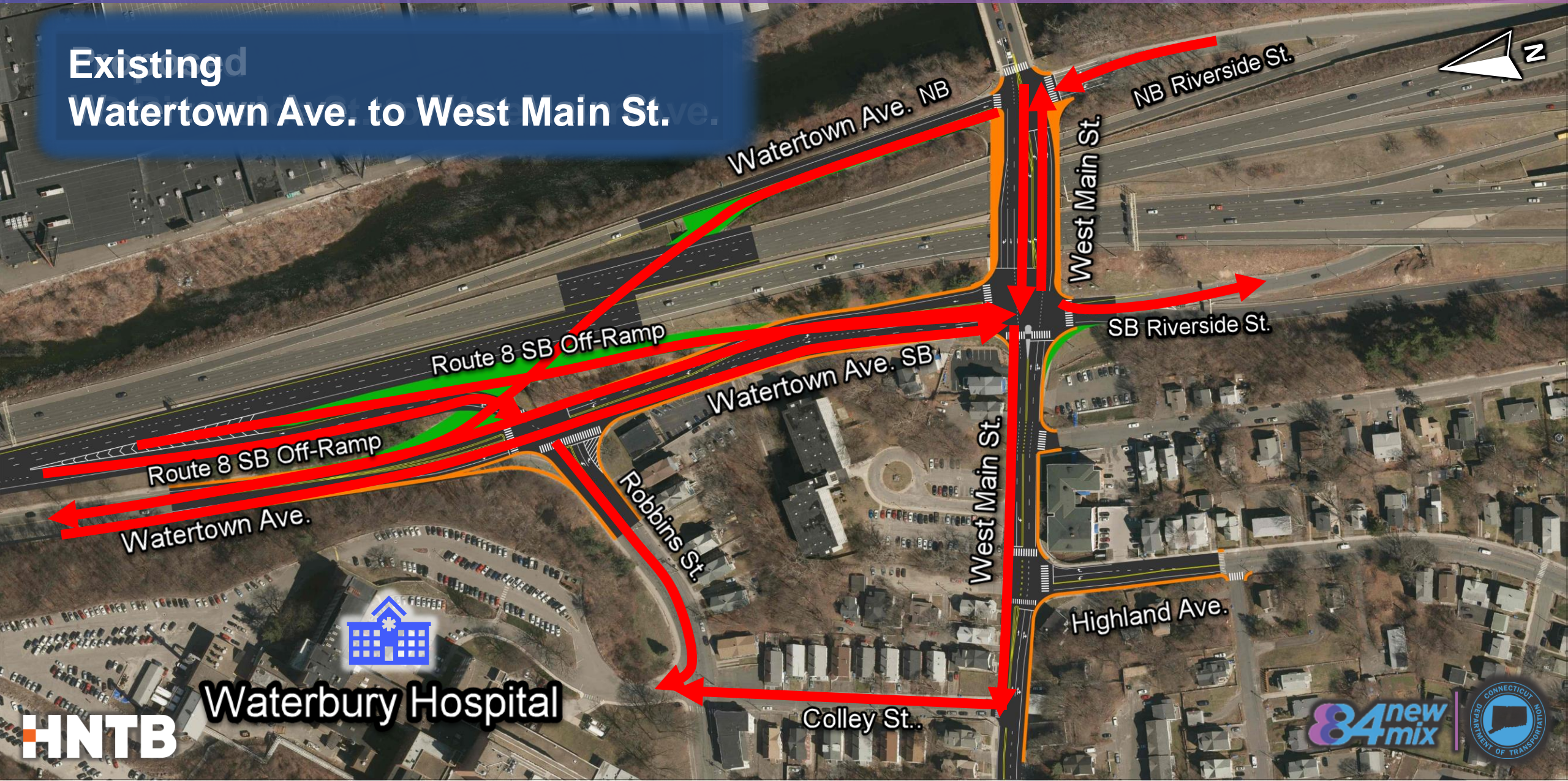


Watertown Ave at Robbins St. / Exit 34



Local Circulation Changes

Existing
Watertown Ave. to West Main St.



Route 8 Exit 35 Interchange City Arge



Route 8 NB Exit 35 Off-Ramp

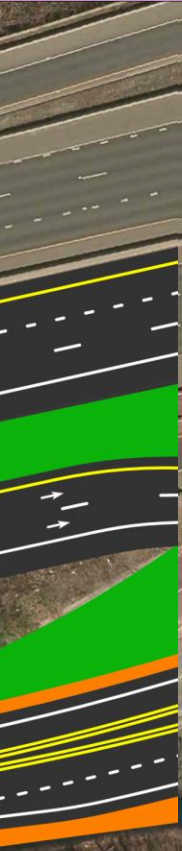
Route 8 SB Exit 35 On-Ramp

To Exit 35

From Exit 35

Route 8 SB Ex

Highway Circulation Changes

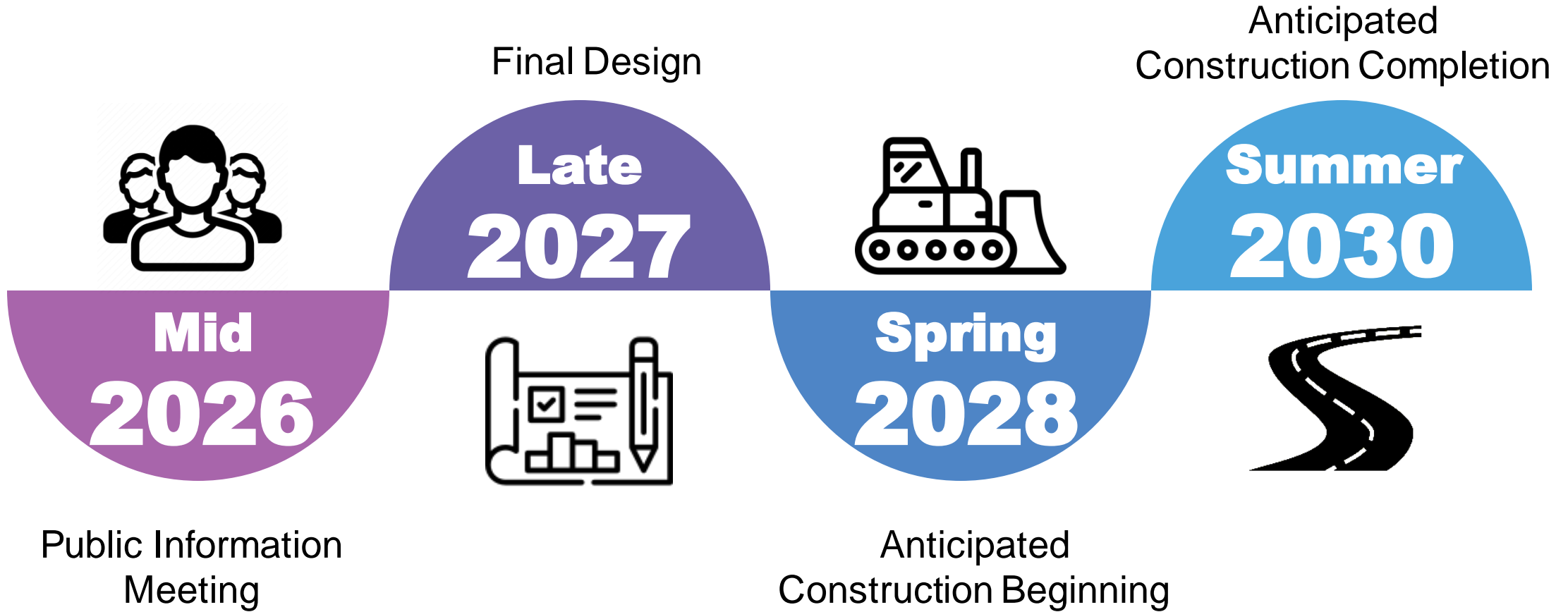


Benefits

- **Improved Safety at project intersections**
- **Improved Travel Time on West Main Street**
- **Reduced congestion on Route 8 SB**
- **Improved Access to Waterbury Hospital from Route 8 SB**
- **Reduced vehicle emissions**



Project Schedule / Cost

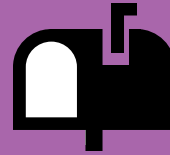


Anticipated Cost:
\$25,000,000 - \$35,000,000

Don't forget to share your input!

Postage

New Mix Project CEPA Comments
Attn: Jonathan Dean, Project Manager
2800 Berlin Turnpike, PO Box 317546,
Newington, CT 06131-7546



Voice Mail

203-805-8018



Email

TheNewMixWaterbury@gmail.com



Comment Form

<https://bit.ly/NewMixInput>



For consideration under CEPA scoping, please share your input by the close of business on **November 30, 2023**, using your preferred method.



An aerial photograph of a highway interchange with multiple lanes and ramps. The image is overlaid with several semi-transparent geometric shapes: a large blue circle in the top left, a purple circle in the middle left, a purple triangle in the middle right, and a purple trapezoid in the bottom right. The text "Thank You" is centered in white, italicized font.

Thank You